

# DIBAL

# LP-2500 Series Labellers



 **North Meat Ltd.**

| Weight (kg) | Price (£/kg) | Total (£) |
|-------------|--------------|-----------|
| 2.325       | 10.15        | 23.60     |

**SIRLOIN STEAK**

PACK DATE 15.10.02 USE BY 20.10.02

RF. number: 050202 324324  
Slaughtered in: 1234  
UNITED KINGDOM  
Cutting in: 4932  
UNITED KINGDOM  
Born in: IRELAND  
Raised in: IRELAND  
Age: 24MONTHS  
Type of animal: CALF



**WASHERS**

WEIGHT K9 N 1.265

2 000019 002970

**DIBAL**

**SPECIAL PIZZA**

INGREDIENTS: CRUST, CHEESE, TOMATO, TUNA, OLIVES, PRawns.

|           |          |
|-----------|----------|
| PACK DATE | 09.07.02 |
| USE BY    | 29.11.02 |

|           |      |        |
|-----------|------|--------|
| WEIGHT K9 | €/K9 | TOTAL  |
| N 0.955   | 5.20 | 4.97 € |

2 000002 004974

PRESERVE COLD

**Double use:**  
stand alone **labellers** or  
**platform indicators with printer**

# LP-2500 Series

# Labellers

The complete labelling solution for the retail and industrial needs

## General features

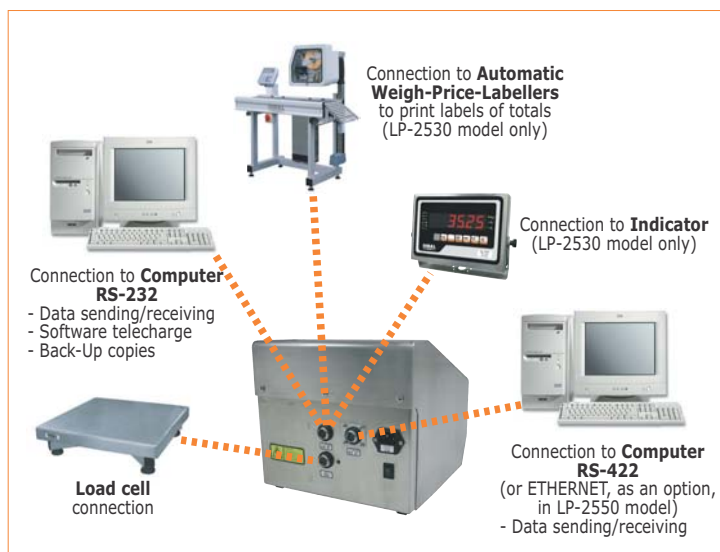
- They can be used as stand alone printers or as platform indicators (6.000 divisions OIML / up to 120.000 NON OIML. Mono-range, multi-range or multi-interval mode, programmable by the user).
- **Stainless steel built.**
- **Back-light LCD alphanumerical display.**
- **1.000 articles** in memory, with 3 lines of 20 characters for the description and/or ingredients. Also, 100 of the articles allow an additional text line with capacity for 252 characters or 128 ingredients (or any combination of texts and ingredients).
- **32+32 pre-sets.**
- **4+4 operators**, a 5 figure code and 20 character name.
- **10 sections**, with name and bar codes: EAN-13 / EAN-128.
- **10 pre-set tares** and a **tare associated** to each article.
- **Up to 4.000 ingredients**, stored in RAM memory.
- **Mains supply (110, 230 Vac).**
- **Dimensions** (width x height x depth): 255 x 230 x 270 mm.
- **Weight:** 7.3 kg.

## Printing functions



- Thermal printer for **label paper, continuous adhesive paper or receipts.**
- **High resolution:** 8 dots/mm.
- **Maximum label size:** 150 x 60 mm.
- **Printing area:** 150 x 54 mm.
- **Cassette system paper replacement.**

- **3 dates:** packing, use by and best before.
- **3 levels of totals** (e.g.: box / pallet / truck).
- **Re-print function:** allows you to re-print the last issued label.
- **Label batches printing**, controlled by key pressing, timer or detection of the last removed label.
- **Cancellation of labels**, deleting them from accumulated totals.
- **Logos** (PC load, by optional RMS application).
- **Bar codes:** EAN-8 / 13 / 128, 3 of 9, 2 of 5 and UPC.
- **20 label formats** programmable by the user.
- **80 fields** for each label format.
- **Beef labelling** according to current European regulation.
- **Reports:** by article, operator, section,...



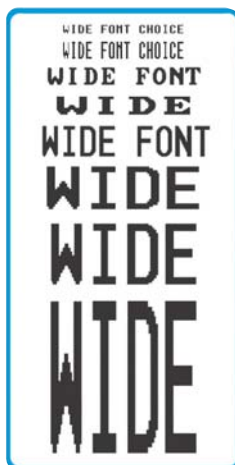
## Communications

- **External load cell connection**, for weight reception.
- **Computer connection\*: RS-232/422 or optional Ethernet.** Optional DIBAL RMS Windows application for article sending, reception and management, logo load, label graphic design, data back-up, etc.
- **Connection to external platform indicator\*.**
- **Label printing from PC or from Dibal Automatic Weigh-Price-Labellers\*** (LP-2530 model only).
- **Internal software updates from PC** (flash memory).

\* Connection to computer, indicator and Automatic Weigh-Price-Labellers cannot be simultaneous.

## Models

| Model   | Communications   |
|---------|--|
| LP-2530 | To computer (RS-232/422), to indicator (RS-232) and to Dibal Automatic Weigh-Price-Labellers (RS-232). |
| LP-2550 | To computer: RS-232 and RS-422 (or Ethernet, as an option).  |



LP-2500 Series / ING / 2° / 05-06. Specifications subjected to change without prior notice.



DIBAL, S.A. - Astintze, 24 (Pol. Ind. Neinver) 48160 Derio (Vizcaya) Spain  
Tel.: (+34) 94 452 15 10 - Fax: (+34) 94 452 36 58  
http://www.dibal.com - E-mail: dibal@dibal.com